



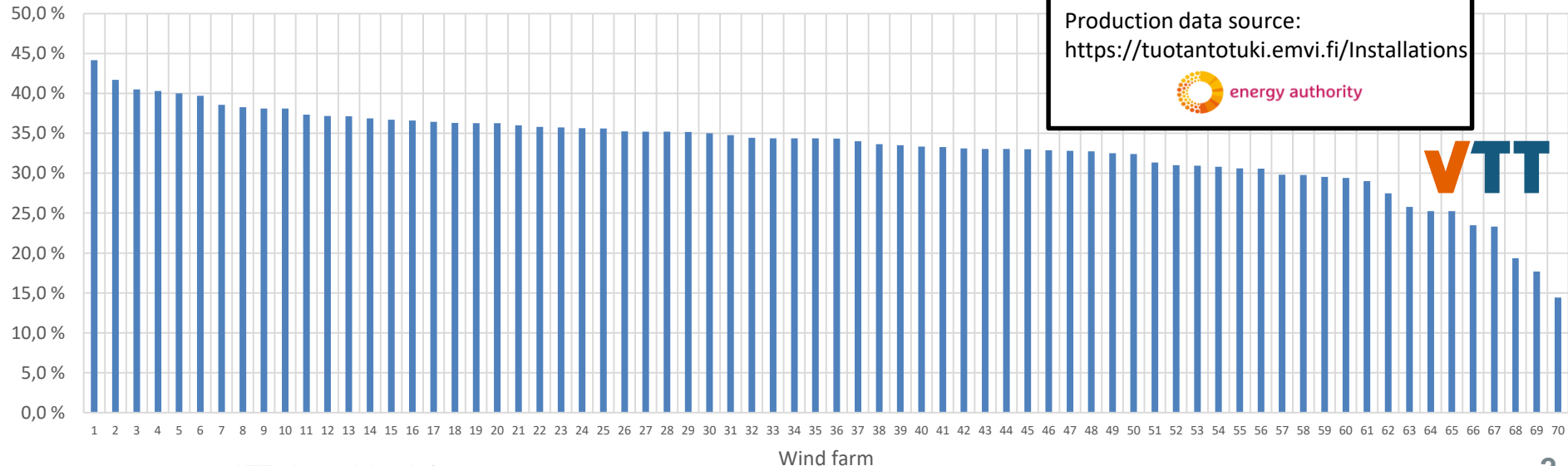
The left side of the slide features a large, abstract geometric pattern. It is composed of numerous overlapping triangles and polygons in various shades of blue, ranging from light sky blue to dark navy blue. The pattern creates a sense of depth and movement, resembling a stylized, crystalline structure or a complex tessellation.

Wind Statistics 2018

Capacity Factor

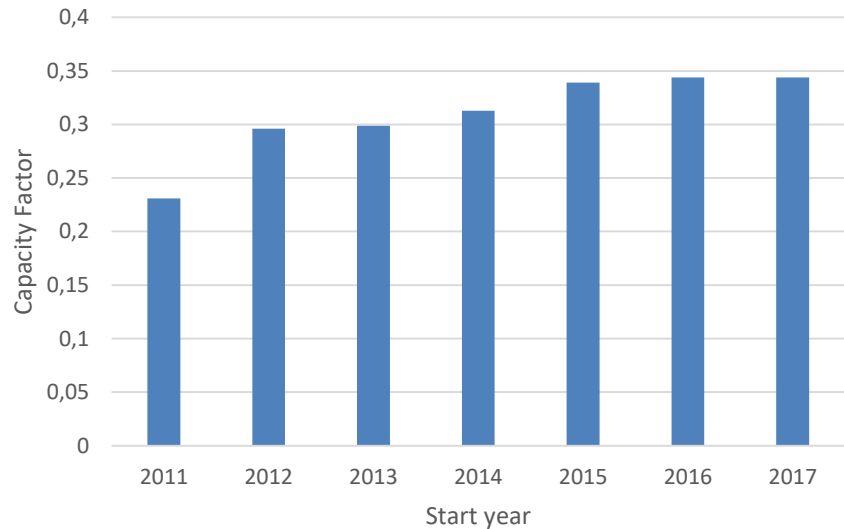
- Average capacity factor
 - 32.3 % (using data from <https://tuotantotuki.emvi.fi/Installations>)  energy authority
 - 32.7 % (using the hourly time series data provided by ET)  Finnish Energy

Capacity Factor by site, Finland 2018

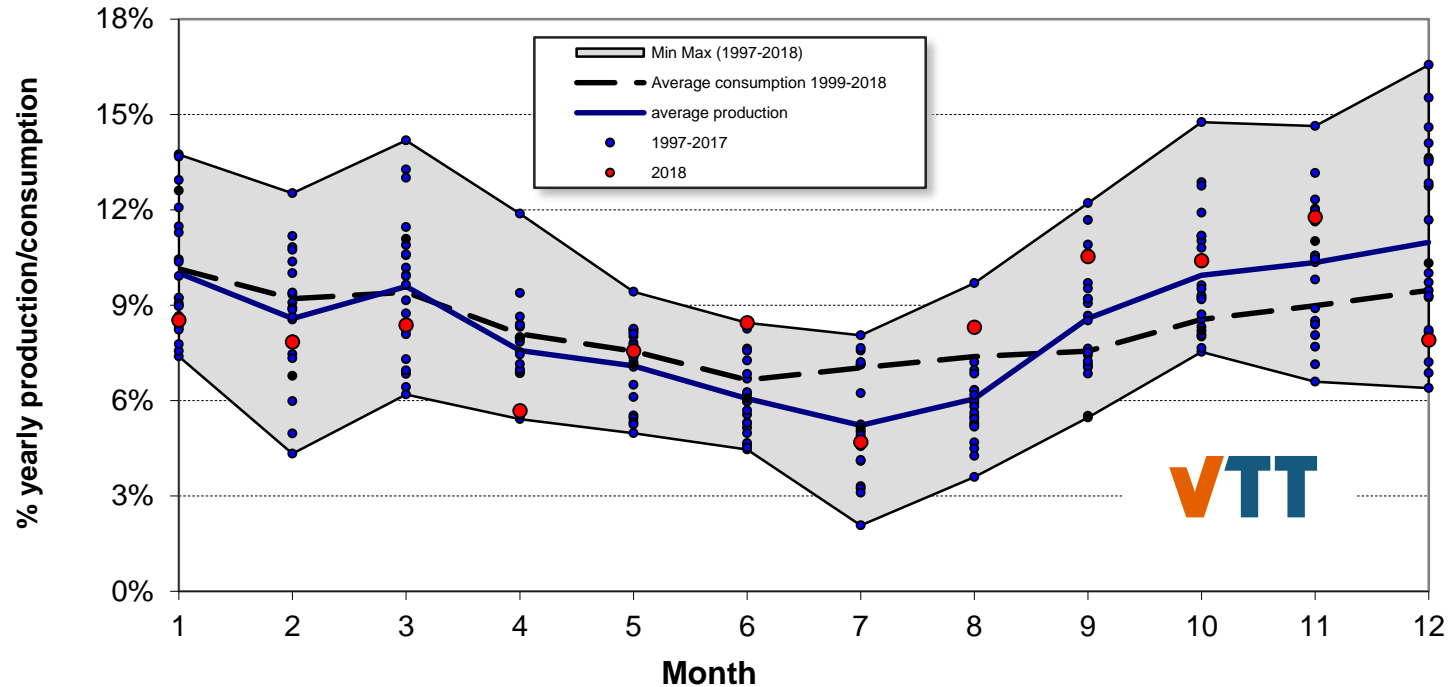


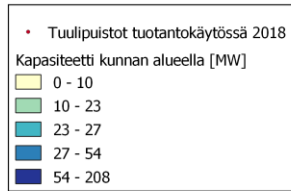
Capacity factor in 2018 vs. age of site

- The chart on the right shows the capacity factor in 2018
- The year in the x-axis is the year the sites were added to the feed-in tariff system.
- The chart shows that the capacity factor of newer installations is higher.
- Data source
<https://tuotantotuki.emvi.fi/Installations>



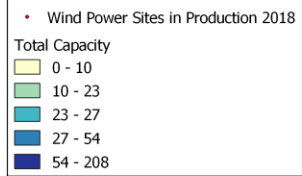
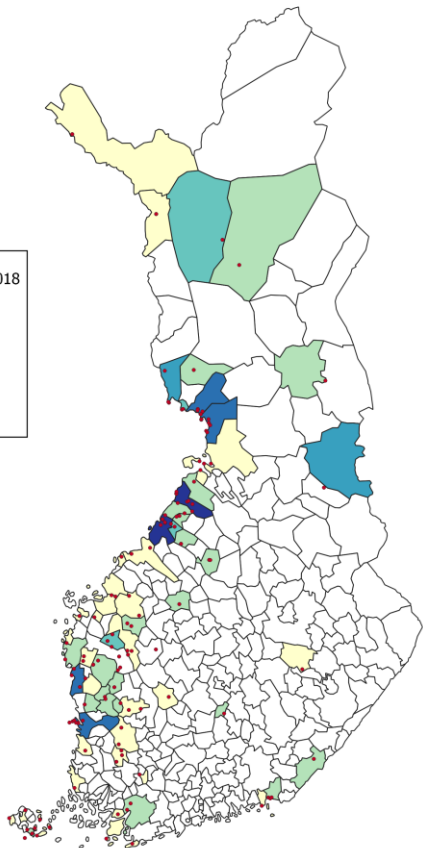
Seasonal Fluctuation





Datan lähde:

Etha Wind: <https://ethawind.com/fi/info/>



Data Sources:

Etha Wind: <https://ethawind.com/info/>

