

Capacity factors of wind power 2019

Capacity Factor

- Average capacity factor

- 33.0 %

- using data from <https://tuotantotuki.emvi.fi/Installations>

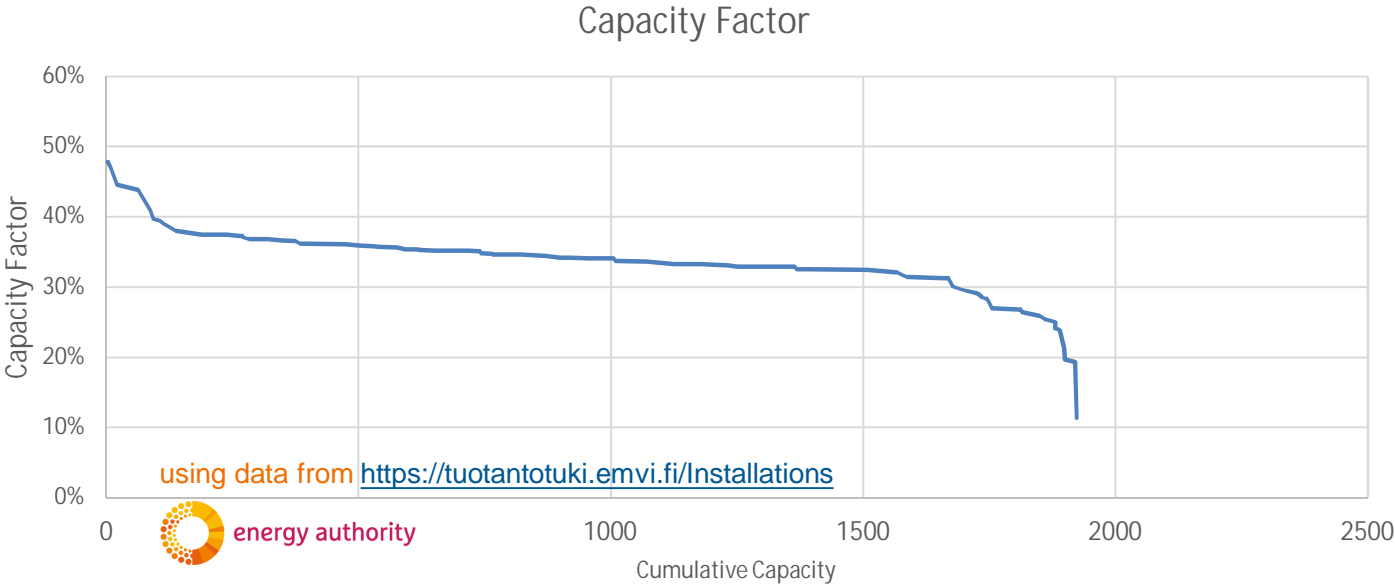


- 32.7 %

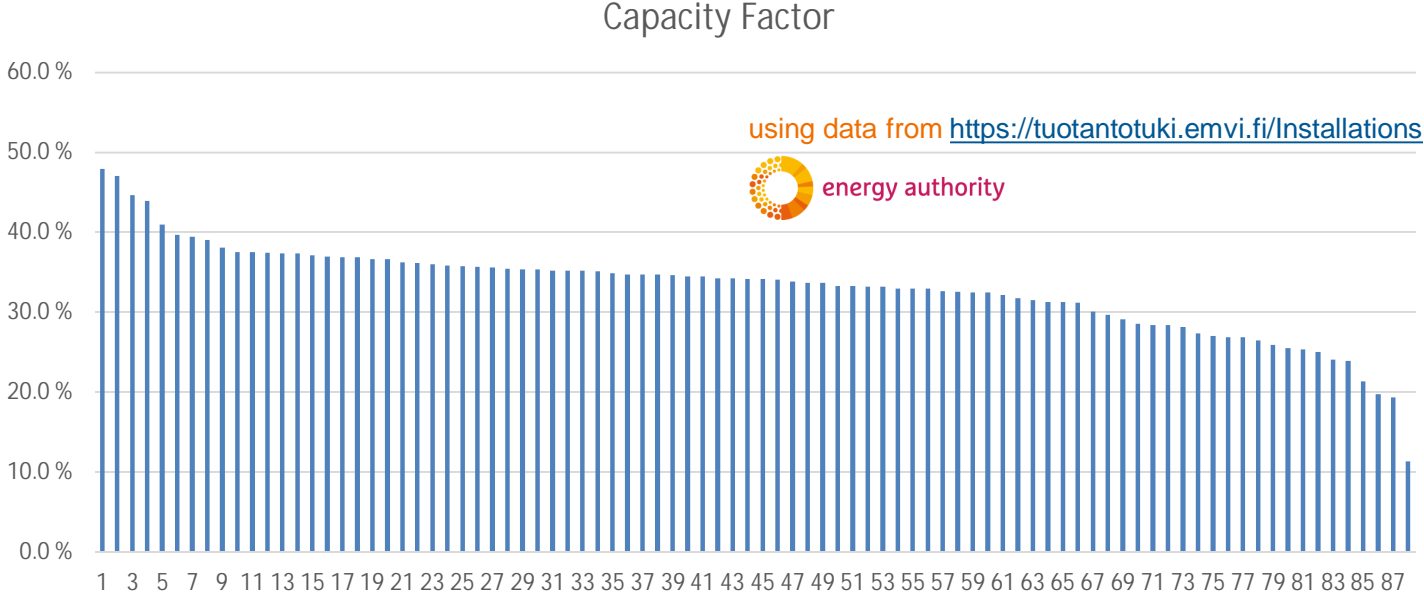
- using the hourly time series data provided by ET



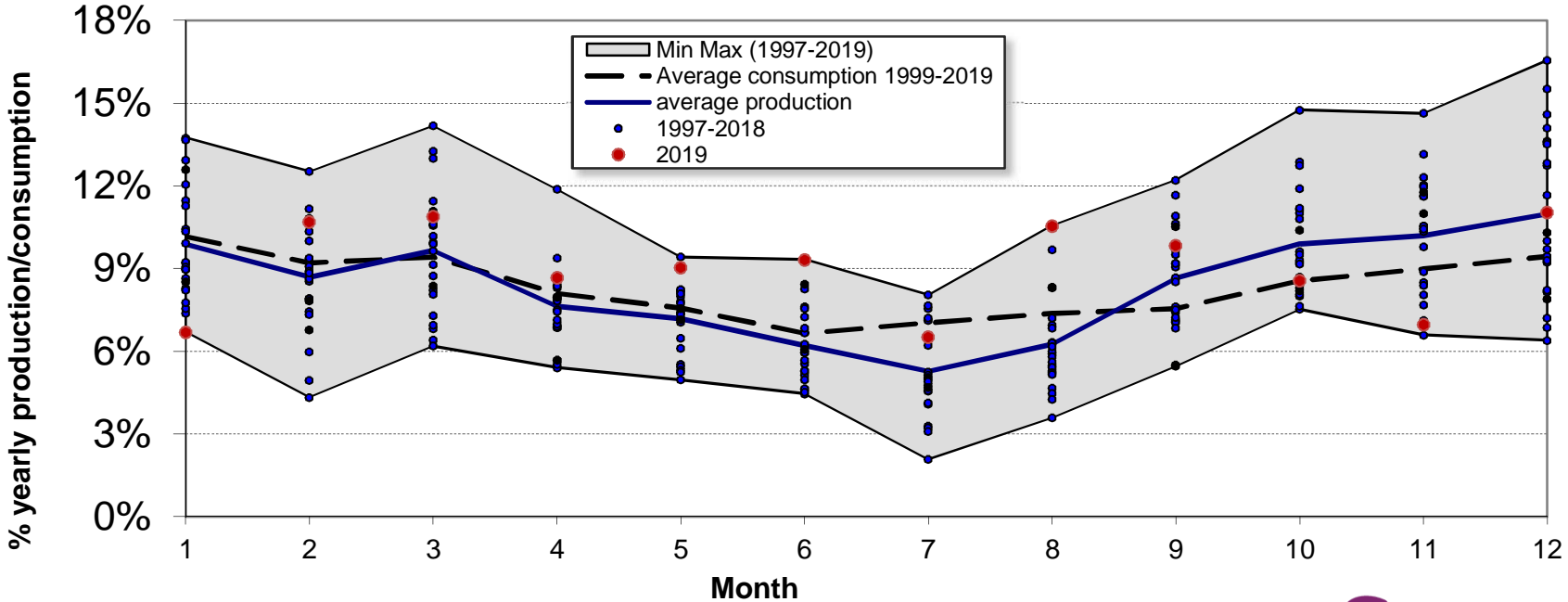
Capacity factor of the sites in the feed-in-tariff system



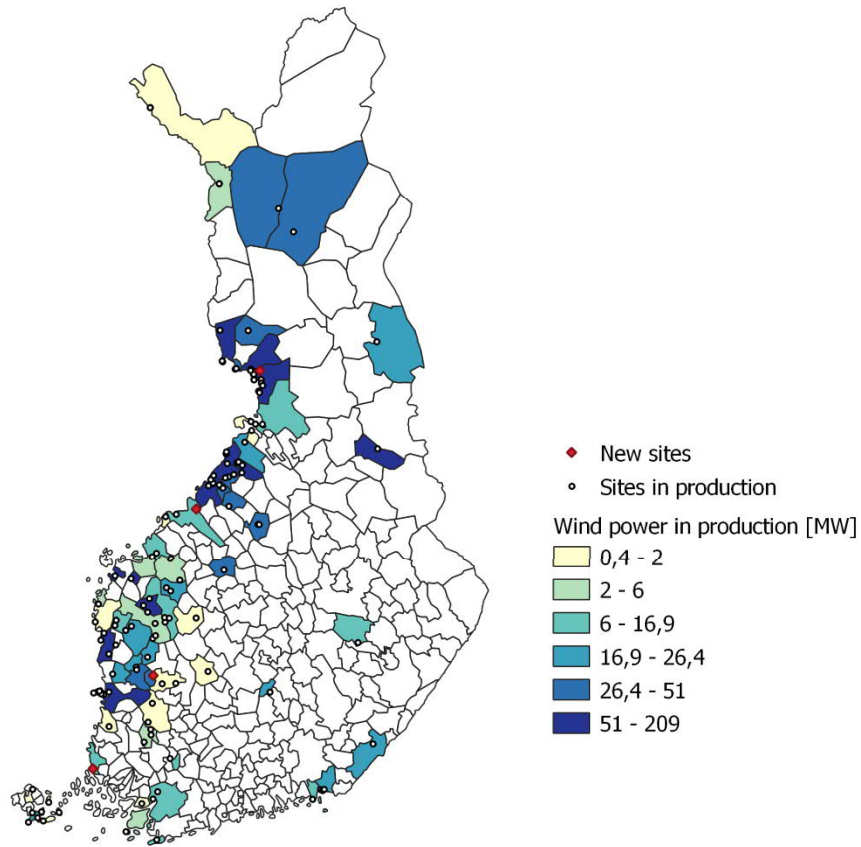
Capacity factor of the sites in the feed-in-tariff system



Wind power share of total production



Wind power in Finland by municipality



bey⁰nd

the obvious

First Name Surname
firstname.surname@vtt.fi
+358 1234 5678

@VTTFinland
@your_account

www.vtt.fi